



# Capital Area College Access Network 2014-15 DASHBOARD REPORT

## Promoting College and Career Readiness and Success in the Capital Area

The Capital Area College Access Network (CapCAN) is a community collaborative focused on making completion of post-secondary education an achievable reality for all residents of the capital area.

**THE MISSION** of CapCAN is to increase college and career readiness, participation, and completion among low-income, first generation, students of color.

**THE GOAL** of CapCAN is to increase the percentage of Capital Area residents with a high quality degree or credential to 60% by 2025. Ingham County is currently at a 46% post-secondary attainment rate.

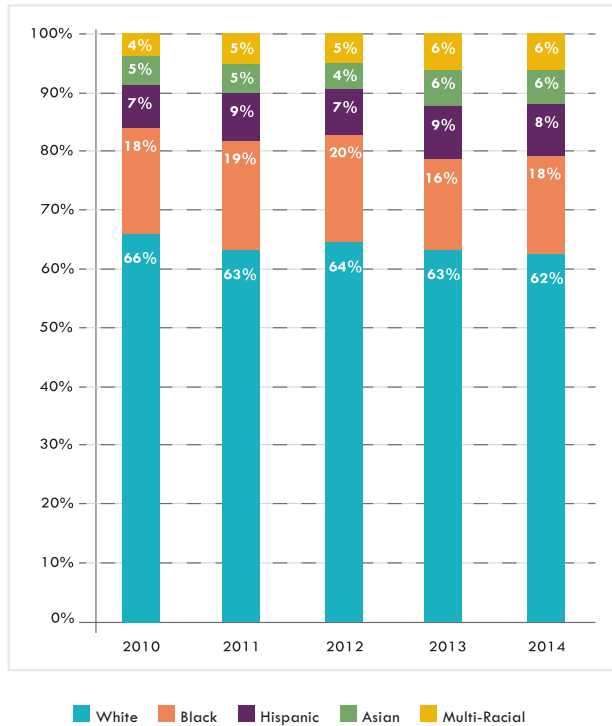
The Executive Leadership Board has identified the following objectives for CapCAN in 2015–16:

- To enhance the college-going culture at each partner school with support for students, principals, counselors, advisers, parents, and teachers.
- To increase the number of residents in the Capital area who pursue an educational certificate or degree beyond high school.
- To increase the financial readiness and capacity of residents in the Capital area to pursue post-secondary education.
- To increase the number of residents in the Capital area who complete and obtain a postsecondary degree or credential.
- To reduce disparities in college attainment for low-income, minority, and first generation students.

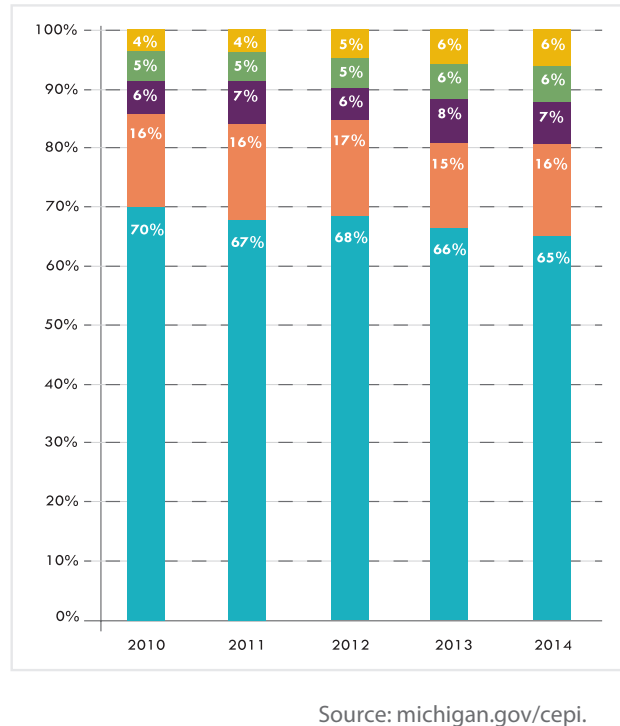
CapCAN has identified the following indicators to monitor the achievement of the objectives. This dashboard will serve as a barometer to measure the outcomes of the community and schools that partner with CapCAN to foster high educational aspirations in our students and align our institutions and resources to advance our vision.



## Composition of Ingham 4-Year Cohort

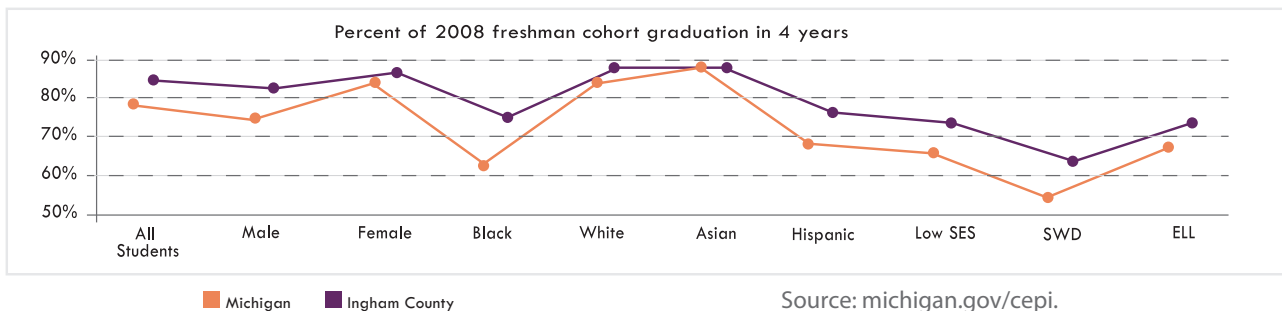


## Composition of Ingham 4-Year Graduates



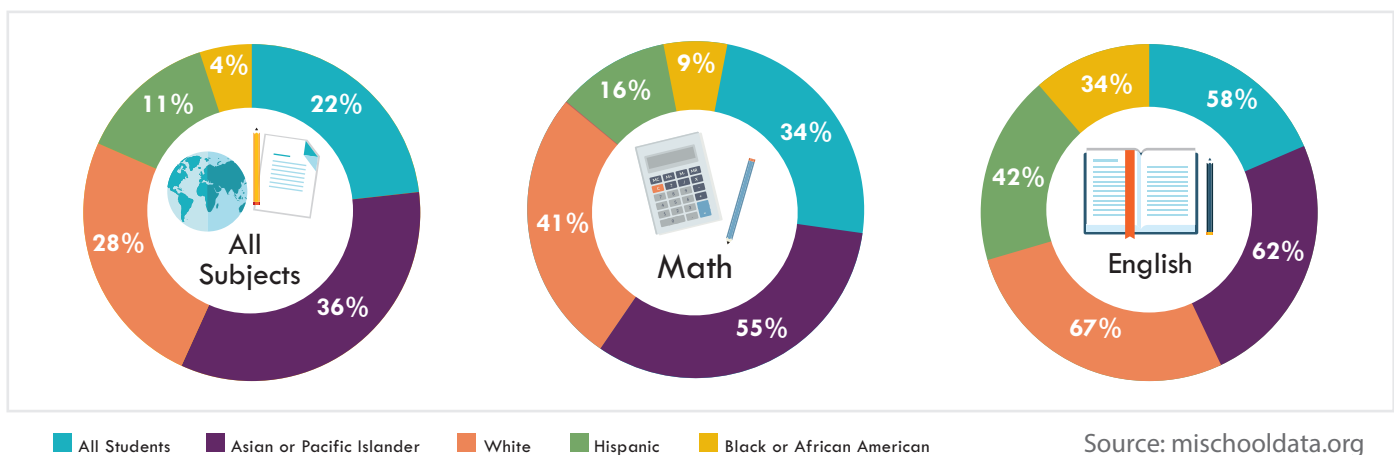
Source: michigan.gov/cepi.

## 2014 Ingham County 4-year Cohort Graduation Rates by Group



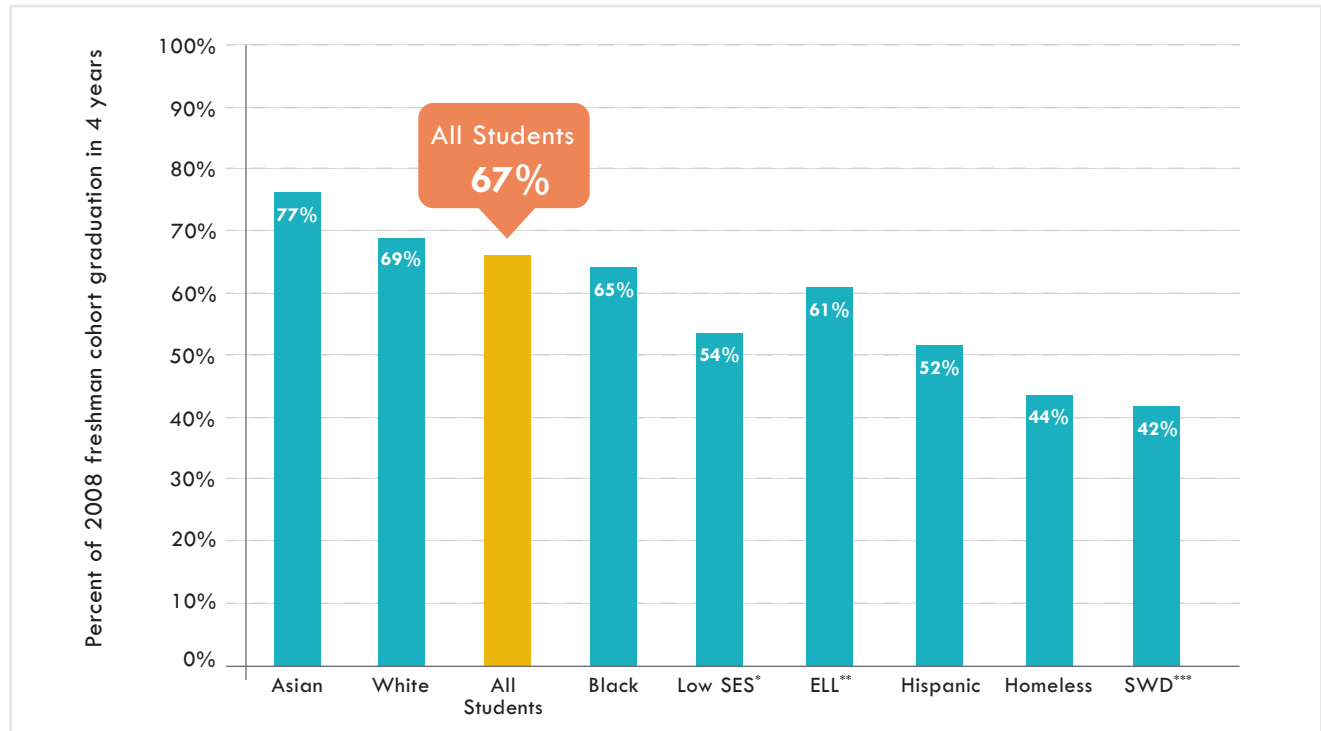
Source: michigan.gov/cepi.

## 2013 - 14 Ingham % Met or Exceeded ACT College Readiness Benchmarks by Race/Ethnicity



Source: mischooldata.org

## College Enrollment of 2014 Ingham High School Graduates



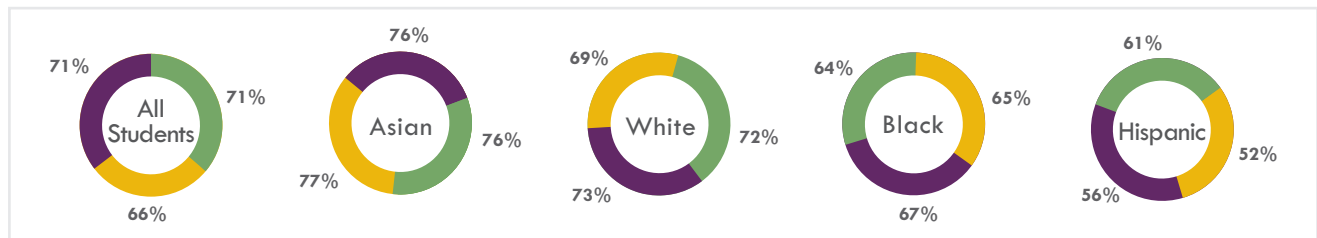
\* Low SES: Low socio-economic status

\*\*ELL: English Language Learners

\*\*\*SWD: Students with Disabilities

Source: mischooldata.org

## College Enrollment of Ingham High School Graduates



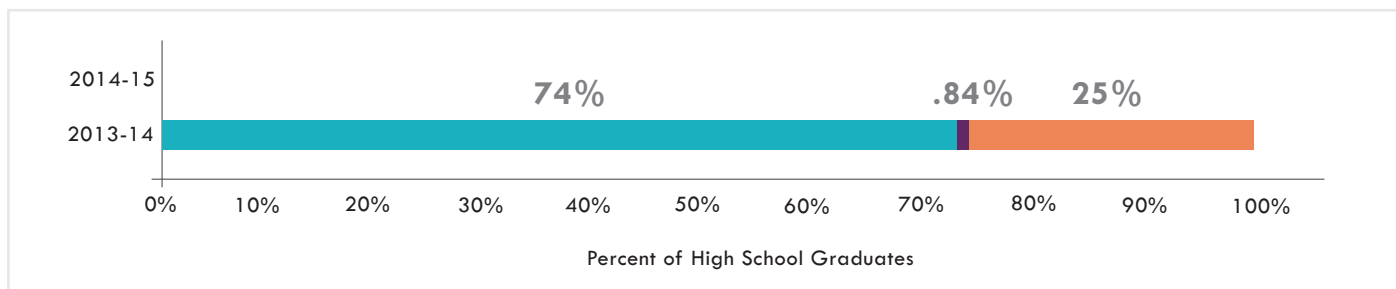
2011-12

2012-13

2013-14

Source: mischooldata.org

## College Progression by Graduating Class



First Year, First Time

Earned Certificate

No Record of College Enrollment

Source: inghamisd.org

## Ingham County 2012: Percentage of students who think learning in school is slightly or not at all important for later life.



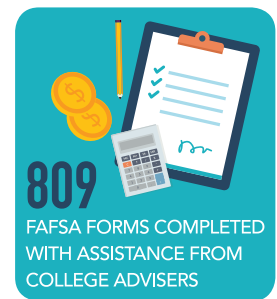
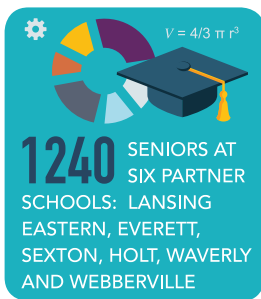
■ 11th Graders all Races ■ 7th Graders all Races

Source: MDE Michigan Profile for Healthy Youth (MiPHY)

## Class of 2015

One of the primary activities of CapCAN this year has been the scaling up of college advising services in additional schools. Holt, Waverly, and Webberville High Schools joined their Lansing Eastern, Everett, and Sexton counterparts in deploying near-peer college advisers.

College advisers are placed in schools with high poverty, low graduation, and low college enrollment to help students navigate the complex college and career exploration process, take college admissions tests, apply to colleges or technical schools that are a good match/fit, complete the FAFSA, secure financial aid, and matriculate to college and other accredited post-secondary institutions. They play a trans-formative role in the buildings in which they are placed by fostering a college-going culture in partnership with school staff particularly guidance counselors.



Find CapCAN on Facebook, Twitter, and LinkedIn or visit [capitalareacan.org](http://capitalareacan.org)

